



Here's how we're building a better Kent

We have three big ambitions for Kent and are asking people, groups and agencies about the actions we need to take next to achieve them.

This is your opportunity to take part in the consultation before 22 August 2011.

Find out more and do the consultation online at www.kentforum.org.uk



The three ambitions opposite are taken from the new Vision for Kent 2011-2021, a strategy owned by the Kent Forum, but shaped by many different organisations responsible for delivering public services in the county.

The ambitions address the areas where we know improvement is needed most.

You can help us to make sure that the actions we plan to take to achieve the ambitions reflect the priorities of the citizens of Kent too.

The feedback you give us will influence the way we set about achieving the ambitions for Kent at this important time, as public services are reformed and realigned against smaller budgets and national policy changes.

Find out more and do the consultation online at www.kentforum.org.uk or use the tear-off consultation form on the back of this leaflet.



Kent Forum is a partnership of the councils that provide services to the people of Kent. It works with other organisations such as the police and health services. Kent Forum is responsible for agreeing shared priorities across Kent and monitoring performance towards them. It responds to the needs of local communities and businesses.

To find out more, visit www.kentforum.org.uk

This leaflet is available in alternative formats and can be explained in a range of languages. Please contact Kent Forum for details:

Email - kentforum@kent.gov.uk

Call - 01622 694122

Three big ambitions

1. Grow the Kent economy 2. Tackle disadvantage 3. Put the citizen in control

The actions that we want to take in support of achieving these ambitions are set out in Vision for Kent 2011-2021. It also explains why they are vital to make Kent a better place.

Growing the economy means supporting businesses to be more successful, improving people's skills, making sure there are lots of good jobs in Kent, providing apprenticeships and other training opportunities for young people.

Tackling disadvantage means a good quality of life for everyone, providing choice and quality in health and social care, a good start in life for all children, helping unemployed people get back into work, bringing run-down areas back to life.

Putting the citizen in control means involving people in making decisions, encouraging more people to volunteer, designing services to meet the needs of people who use them, tackling crime and antisocial behaviour.

The ambitions are supported by many of the organisations that provide services to you. Some are featured over the page.

The Kent Forum's job is to ensure that we all work together to make good progress towards achieving the ambitions.

The full consultation draft of **Vision for Kent 2011-2021** is on the Kent Forum website, www.kentforum.org.uk. There are also links to the partners' plans for delivering services, which provide more detail on their part in achieving the ambitions.





**Kent
Police**

‘...Kent Police will continue to work as partners in delivering the Vision for Kent and in providing a first-class service and reducing crime and disorder’.

Kent Police



**Kent Fire &
Rescue Service**

‘...A disproportionate number of fires and road accidents are connected with vulnerable adults and people living in areas of deprivation, so we will focus on these groups’.

**Kent & Medway Fire &
Rescue Authority**



Kent and Medway

‘...We will tackle health inequalities and reduce demand on health and social-care services by supporting people to make healthier lifestyle choices and plan for their futures’.

**Health (Kent and Medway
Primary Care Trust Cluster)**



‘...Our job is to work with people and communities to protect and improve water, land and air, and to reduce climate change and its consequences ... In Kent, where 70,000 properties are at risk from flooding we are working with communities to help protect them’.

Environment Agency





'...We will make Kent a county of opportunity, where aspiration rather than dependency is supported, particularly for those who are disadvantaged or who struggle to help themselves and their family'.

Kent County Council



'...The work of the voluntary and community sector touches every part of the lives of Kent's citizens, and Kent CAN, on behalf of the sector, looks forward to lending its full support to achieving the Vision for Kent'.

Kent CAN exists to support and promote the voluntary and community sector in Kent and Medway



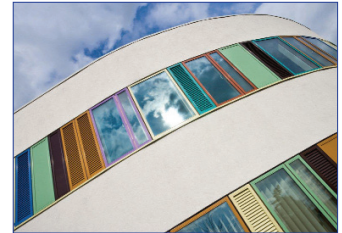
'...Our colleges will respond to the specific needs outlined in Vision for Kent, which focus on the identified gaps in educational attainment and skills across the county ... we will promote flexible and appropriate progression opportunities for Kent's learners, both academic and vocational'.

Kent Association of Further Education Colleges



'A strong bus network will contribute to reducing traffic congestion, assist in growing the economy and help to tackle disadvantage in the county'.

Arriva Southern Counties



Find out more and do the consultation online at www.kentforum.org.uk



Vision for Kent consultation

Our three ambitions for Kent are:

- Grow the Kent economy
- Tackle disadvantage
- Put the citizen in control

To help us make sure that the actions we plan to take to achieve the ambitions reflect the priorities of the citizens of Kent, complete the tear-off slip opposite, put it in the envelope provided and post - no stamp required.

Alternatively you can complete the consultation online at www.kentforum.org.uk

Please ensure your response reaches the Kent Forum by 22 August 2011.

If you would like feedback following the consultation, please supply your email or postal address on the form.



Vision for Kent consultation

1. We have identified areas of work that we think will help achieve the ambition of **growing the economy in Kent**:
Please put ticks in the boxes next to the two actions that you think are most important

- Improve Kent's infrastructure (roads, rail, broadband connection)
- Give businesses tailored support to help them be more successful
- Work to free businesses from unnecessary regulation
- Provide opportunities for adults to continue to learn new skills
- Encourage companies to take on more apprentices and trainees
- Find ways to tackle climate change and use fewer resources (such as power and water)

-
2. Please tell us what else we could do to achieve the ambition of **growing the economy in Kent**
I think...

3. We have identified areas of work that we think will help achieve the ambition of **tackling disadvantage in Kent**:
Please put ticks in the boxes next to the two actions that you think are most important

- Work to provide a choice of high quality health and social care
- Help people improve their mental and emotional health
- Support unemployed people to get back into work
- Encourage young people to be in education, training or work
- Build homes people want to live in and communities they want to be part of
- Make it easier for everyone to find and use the public services they need

-
4. Please tell us what else we could do to achieve the ambition of **tackling disadvantage in Kent**
I think...

5. We have identified areas of work that we think will help achieve the ambition of **putting citizens in control in Kent**:

Please put ticks in the boxes next to the two actions that you think are most important

- Involve people in making decisions on public services and spending
- Design services to meet the needs of the people who use them
- Support people in taking more control over what happens in their neighbourhood, for example giving them more say on how community buildings are put to good use
- Help charities and other voluntary organisations to do more good work
- Tackle crime and anti-social behaviour
- Help more people become volunteers in their community

6. Please tell us what else we could do to achieve the ambition of **putting citizens in control in Kent**

I think...

Please tell us the postcode where you live. This helps us check that we have a good spread of views from all over Kent:

If you would like feedback at the end of this consultation, please provide your email address or postal address:

Thank you for completing the consultation. Please put it in the envelope provided and post - no stamp required.

